



# Fault Tree Macros

## Plugin Manual for ASCE 4.2

---

- File name: fault tree macros v0.1.xml
- Version: 0.1.6
- Applies to: Networks using the Fault tree schema only

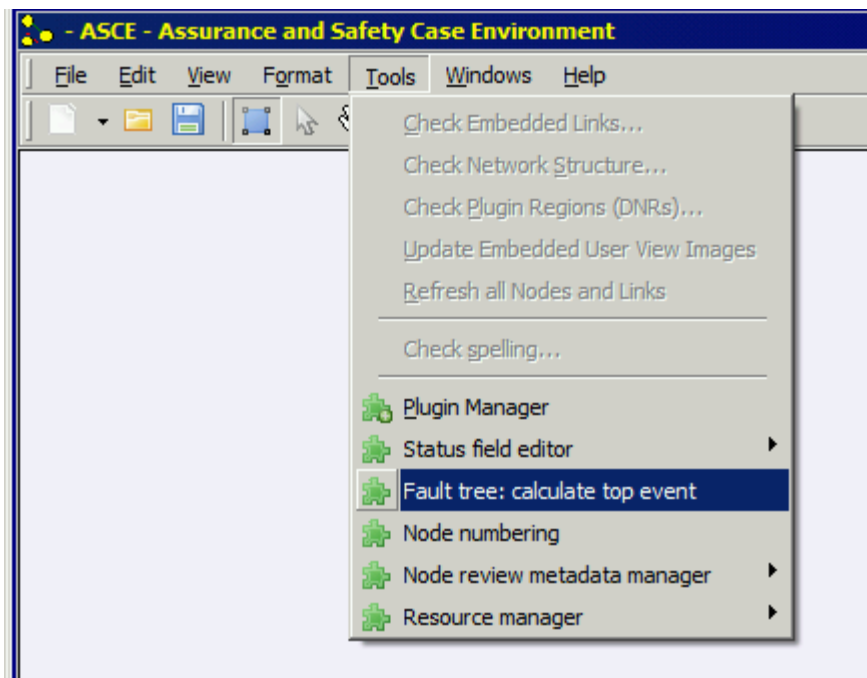
### 1 Description

Fault tree calculation plugin - *for demonstration purposes only.*

An example network using the Fault Tree schema is available under the start menu for ASCE.

This plugin is loaded when a fault tree network is being edited. It provides an implementation of the standard probabilistic fault tree algorithm, and demonstrates how a plugin and schema can be used together to provide a combined capability.

To see it in action, run the Tools→Fault tree: calculate top event menu item from the Tools menu in ASCE. It calculates the probabilities which are then displayed on the derived event nodes.



You should be able to modify the base probabilities and recalculate, but there is not a whole lot of error handling yet. It does detect whether any nodes have multiple parents (not strict tree), but there are various other checks that could eventually be put in if there is sufficient demand.