



ADELARD

Arrangement Tools

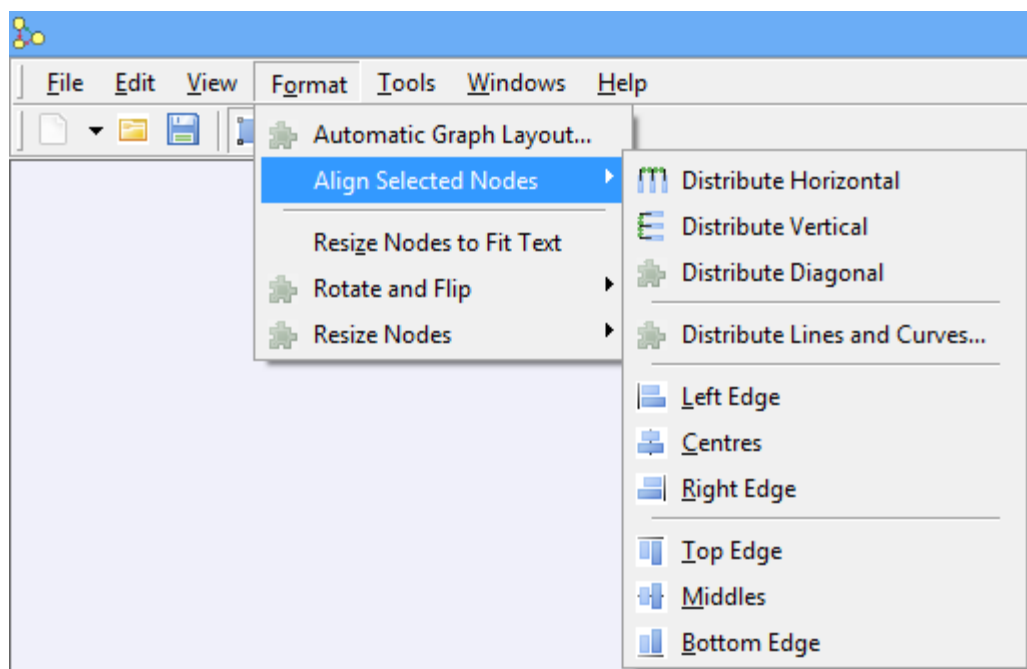
Plugin Manual for ASCE 4.2

- File name: adelard arrangement macros.xml
- Version: 0.3.1
- Applies to: All networks

1 Description

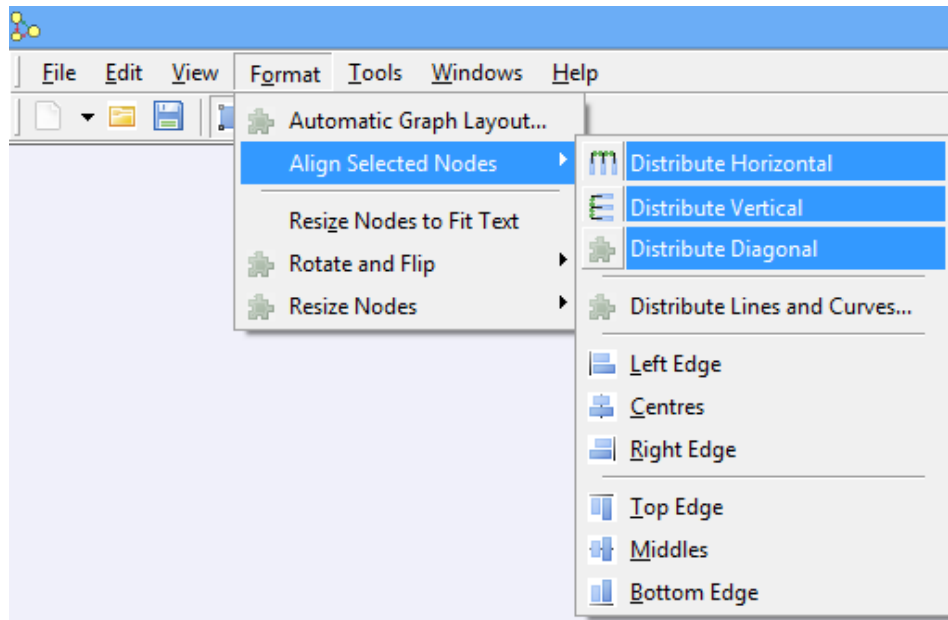
This plugin provides a number of features for arranging and alignment of nodes in the main view. It has superior functionality and user friendly features than the 0.2.6 version.

The plugin adds extra menu entries to the "Format" menu in the main window, and user view windows:



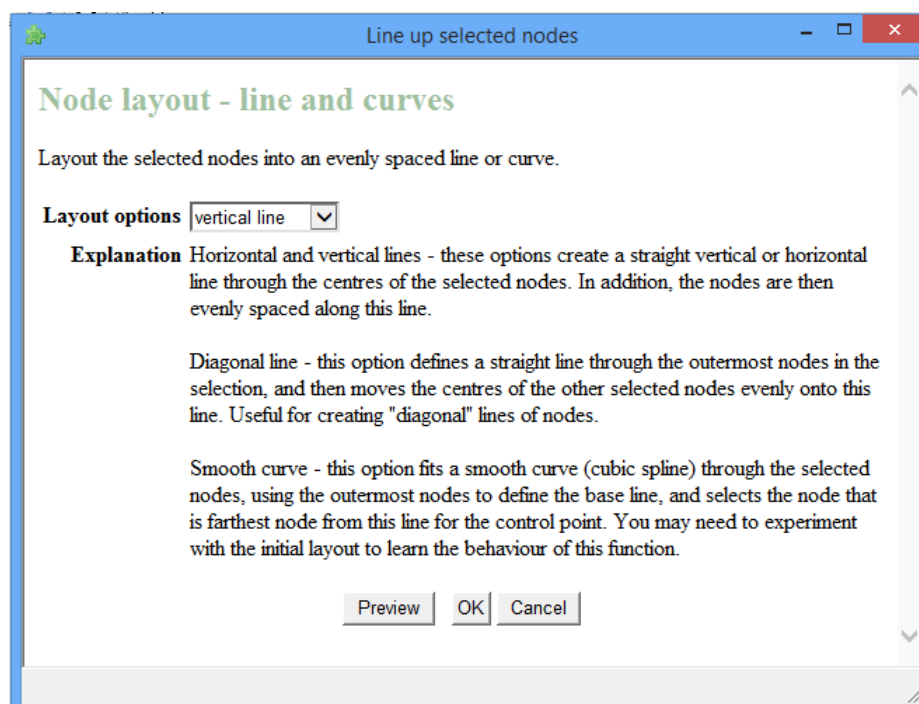
1.1 Distribute Horizontal, Distribute Vertical and Distribute Diagonal

These functions are new and allows selected nodes to Distribute Horizontally, Vertically and Diagonally in a straight line.



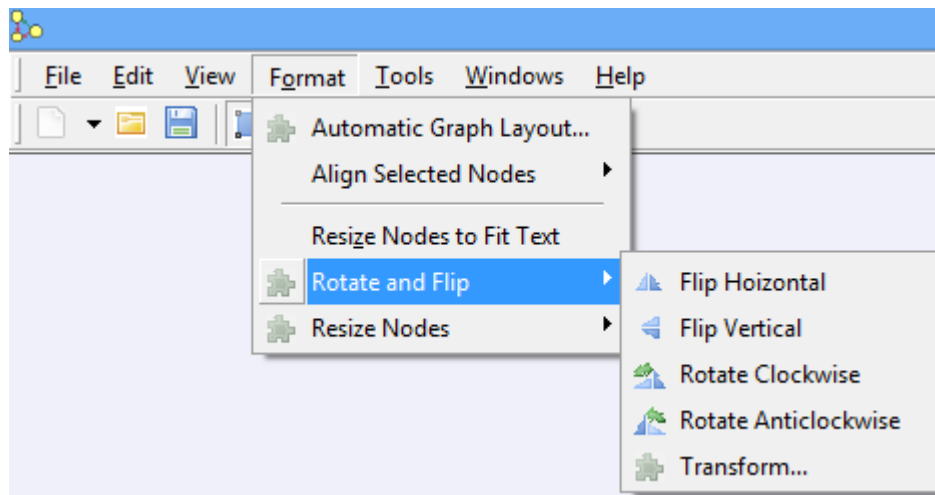
1.2 Distribute Lines and curves

This function allows you to align the selected nodes into a straight line (horizontal or vertical), Diagonal line or smooth curve, evenly spaced.



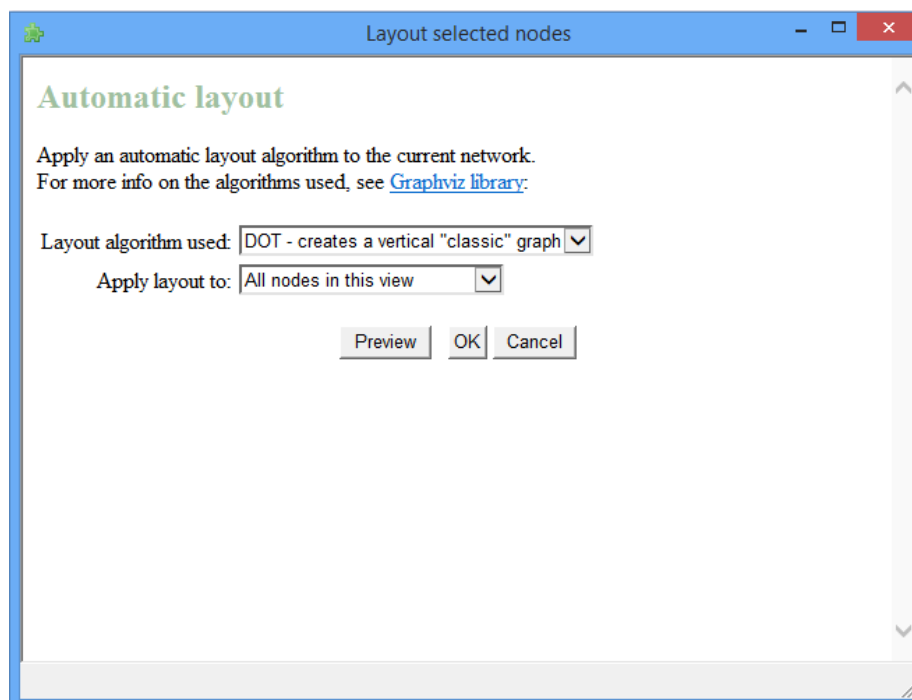
1.3 Rotate and flip

This function allows you to rotate the selected nodes around their centre point.



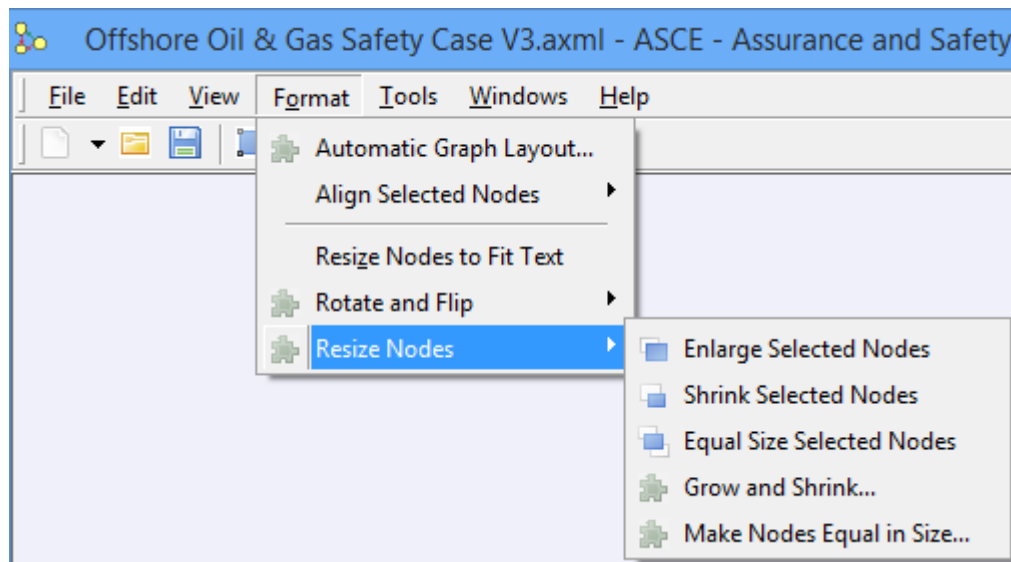
1.4 Automatic graph layout

This function allows you to layout the whole network of the sub tree from some node using the the Graphviz libraries. This function can also be accessed via the context menu for each node in the main window



1.5 Resize Nodes

This function allows you resize selected nodes by specified or pre-defined amount.



1.6 Grow/Shrink

This function allows grow or shrink selected nodes by a specified amount (0.9 means shrink to 90%, 1.2 means grow to 120%).

- Grow/shrink in-place - nodes get bigger or smaller, but the distances between their centres remains constant
- Grow/shrink size and location from origin - nodes get bigger and smaller - effectively shrinking the canvas

